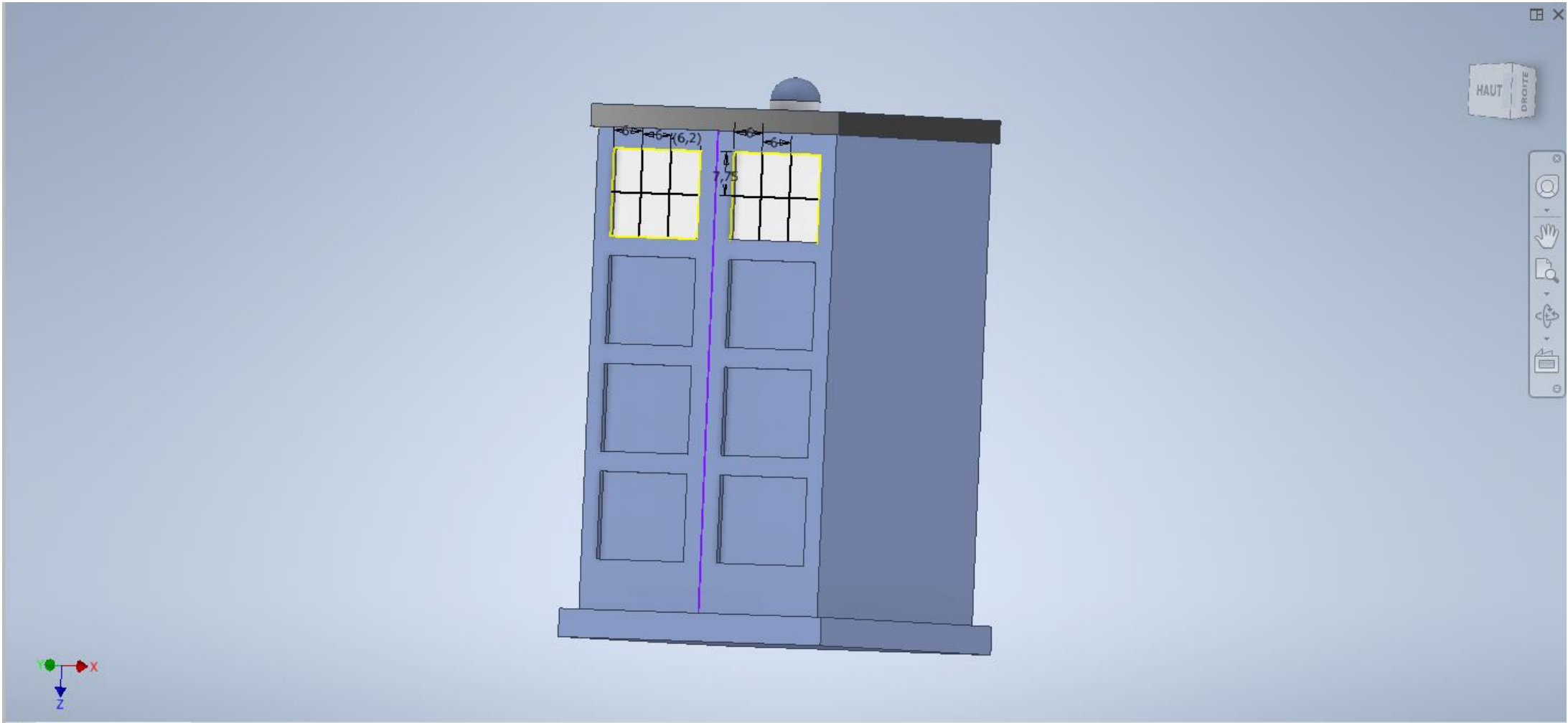
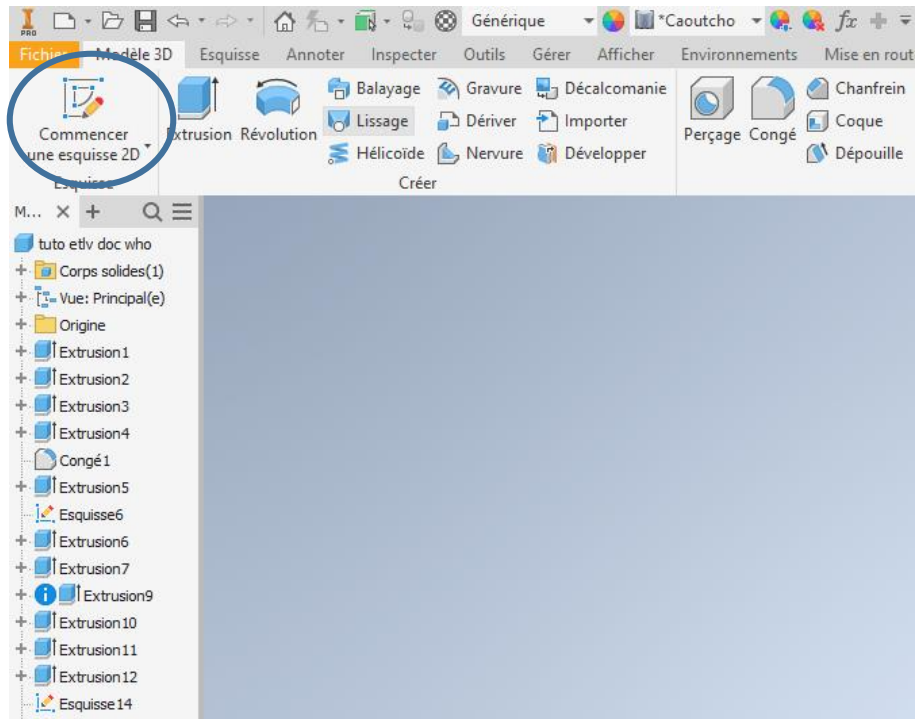


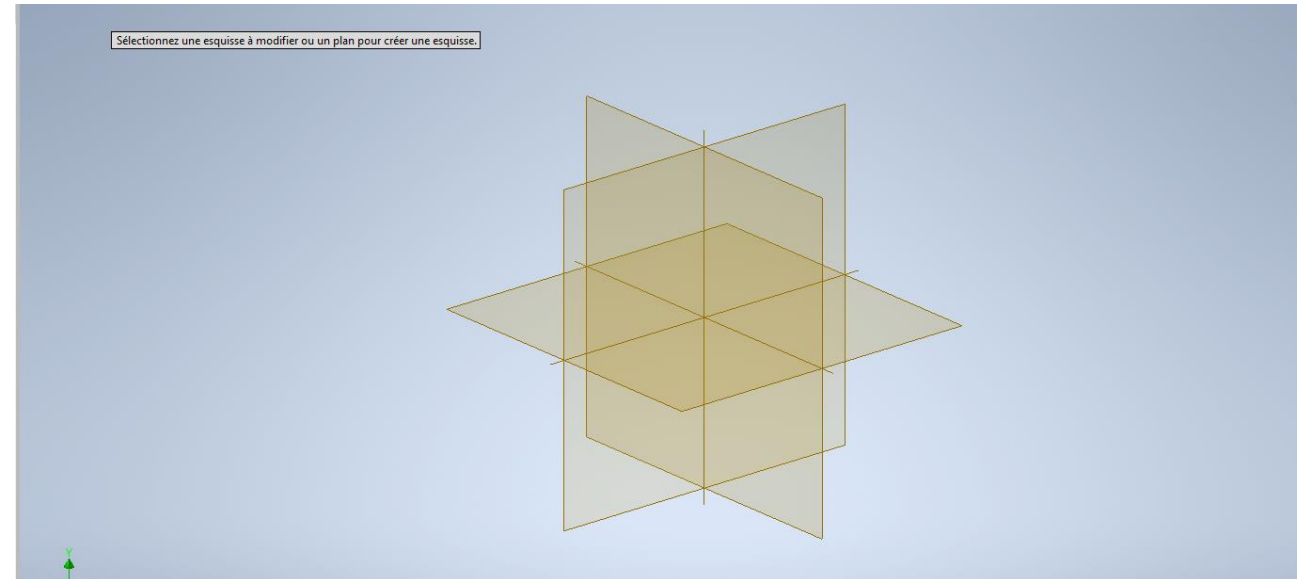
# Tutorial to create the doctor who's cabin



1.to start click on new then sketch in the inventor software

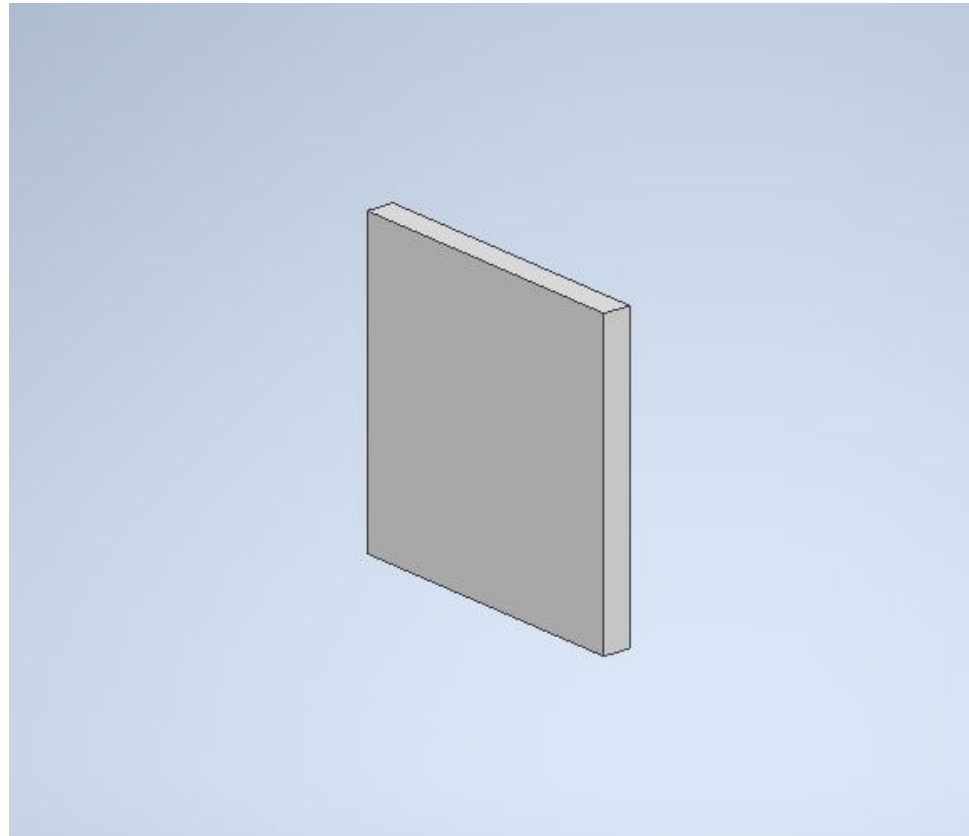


2.then select a plan the one you want

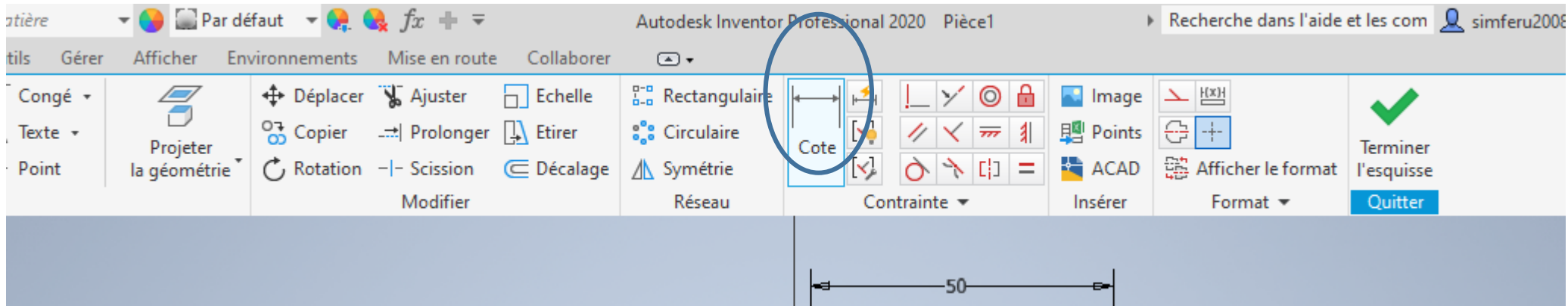


- Click on rectangle and plotted a square of 55mm
- then click on model 3d at the top left then 5mm extrusion

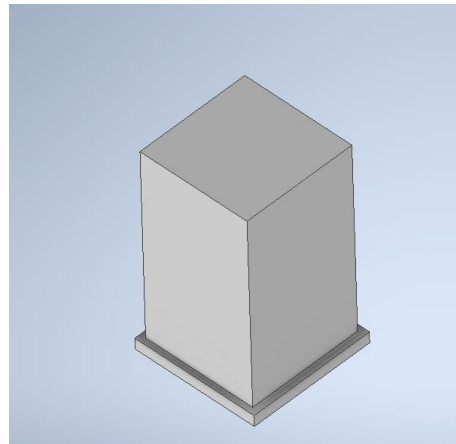
you should get this:



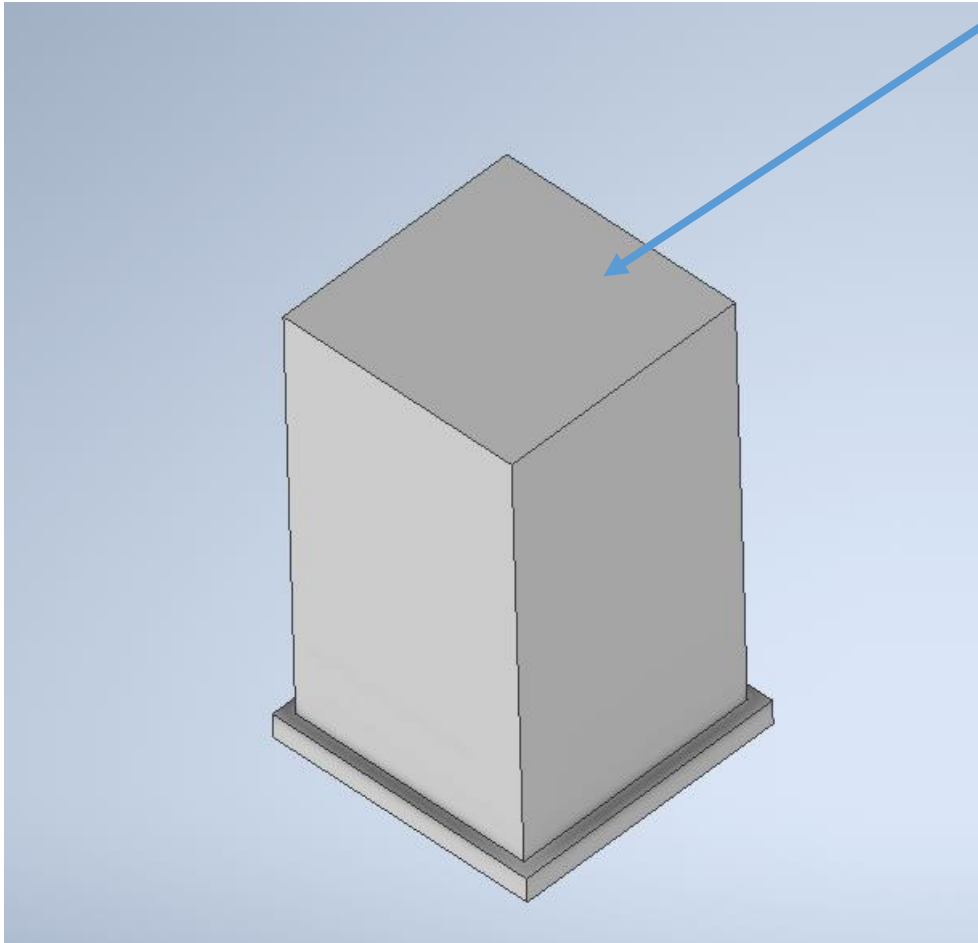
- repeat a sketch of the face of this square
- drawn a square of 50mm
- equalized the gap between the 2 squares using the tool rating and put a rating of 2.5mm



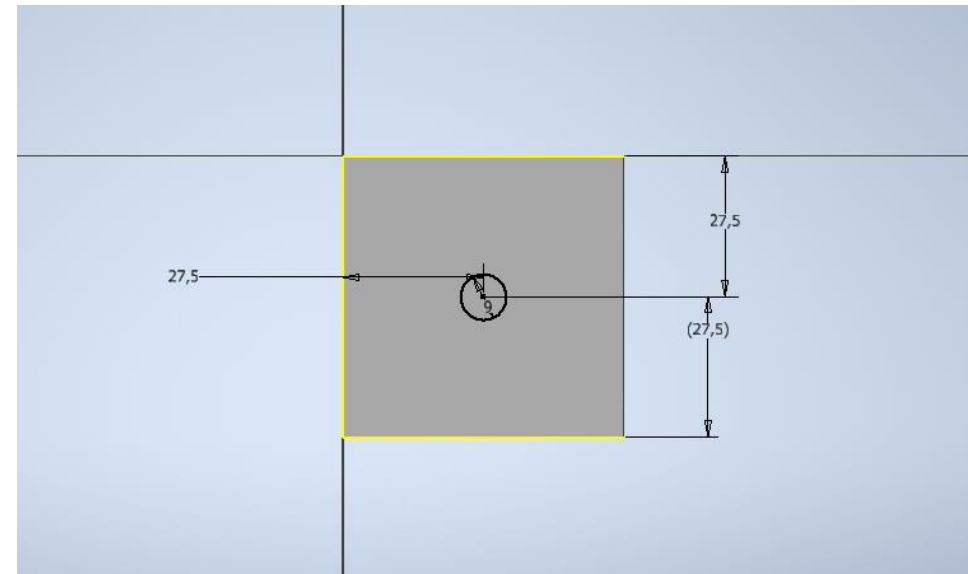
- then make an 85mm extrusion
- so you should get this



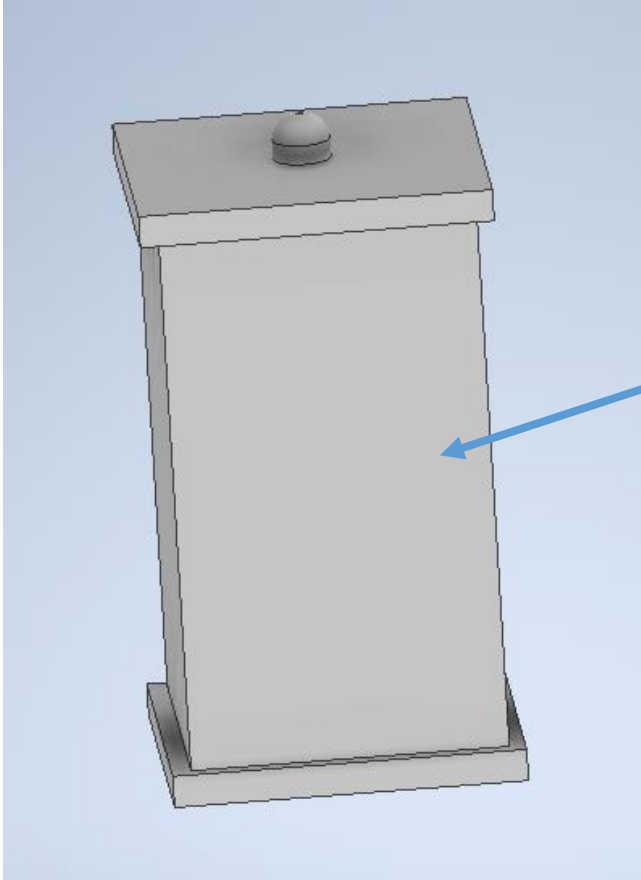
- then begin a sketch of this face



- .trace a square of 55mm
- .and make an extrusion of 5mm
- . in the center of the square drawn a circle of 9mm
- . to center it is enough to score between the circle and a stop 27.5mm

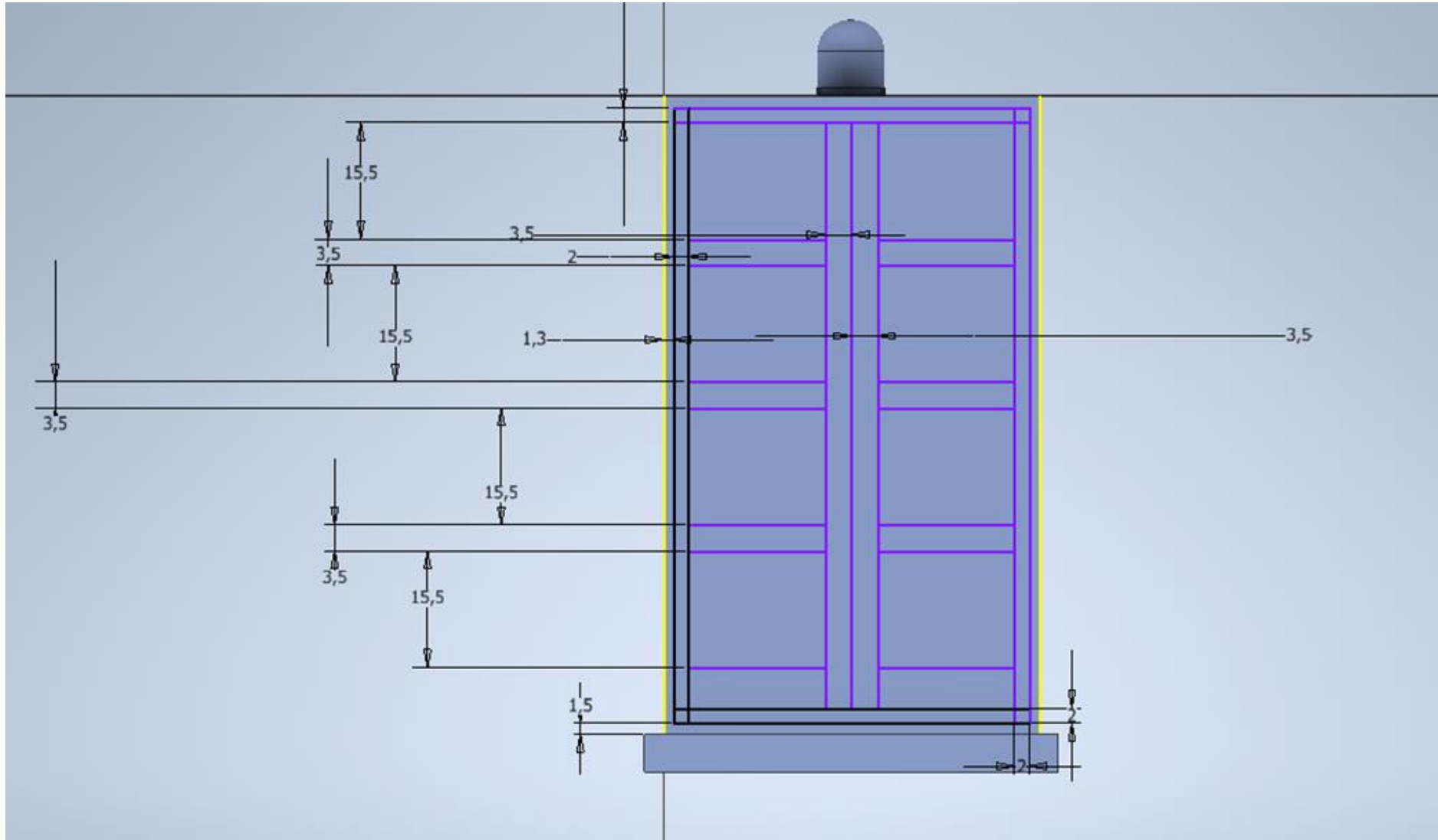


- make a 7mm extrusion and a 4mm gap
- you should get this:

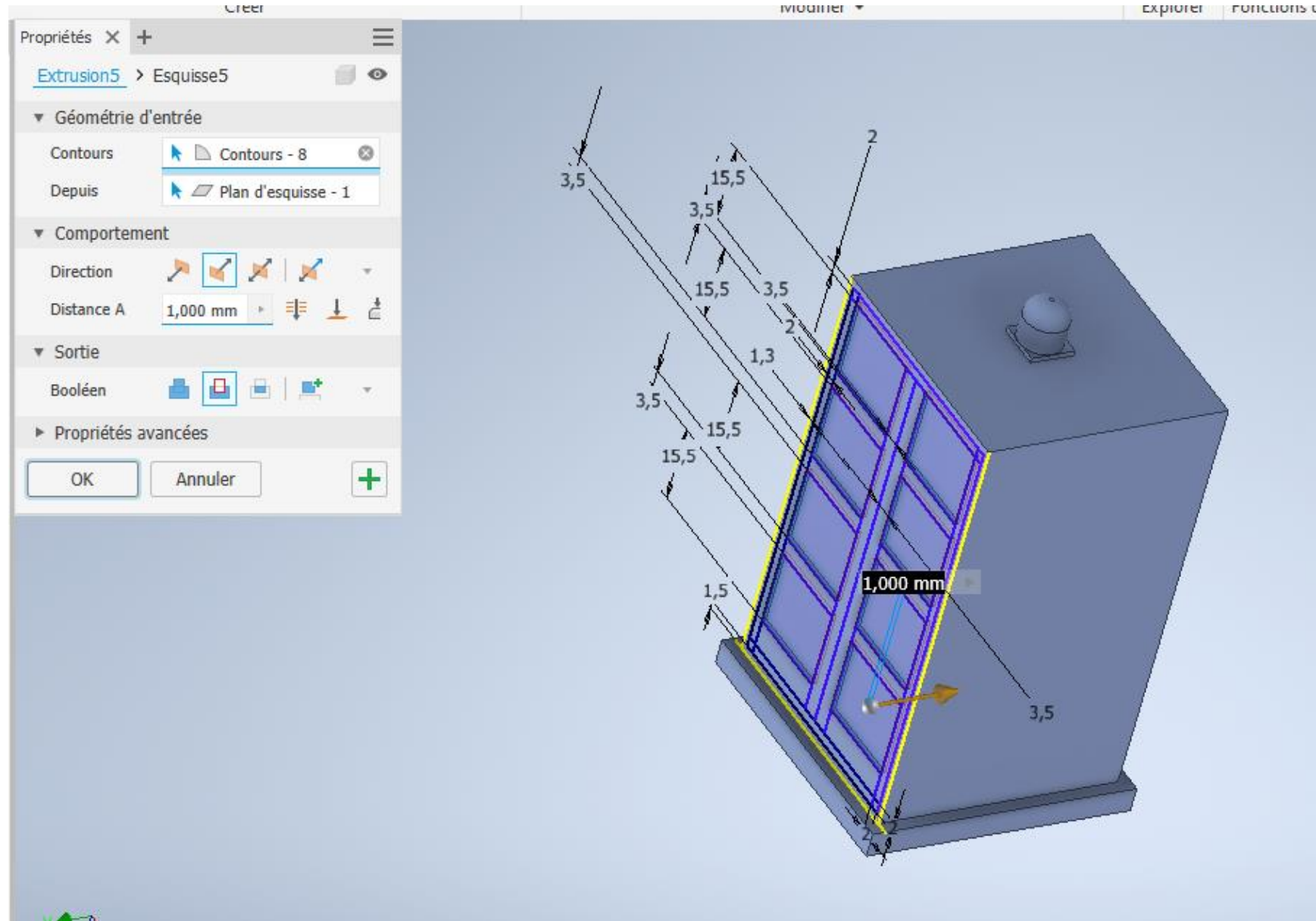


start a sketch on this face

- . do this by drawing 2mm strips on each side of the face with a gap of 1.5mm with the edges
- . and follow the model below:

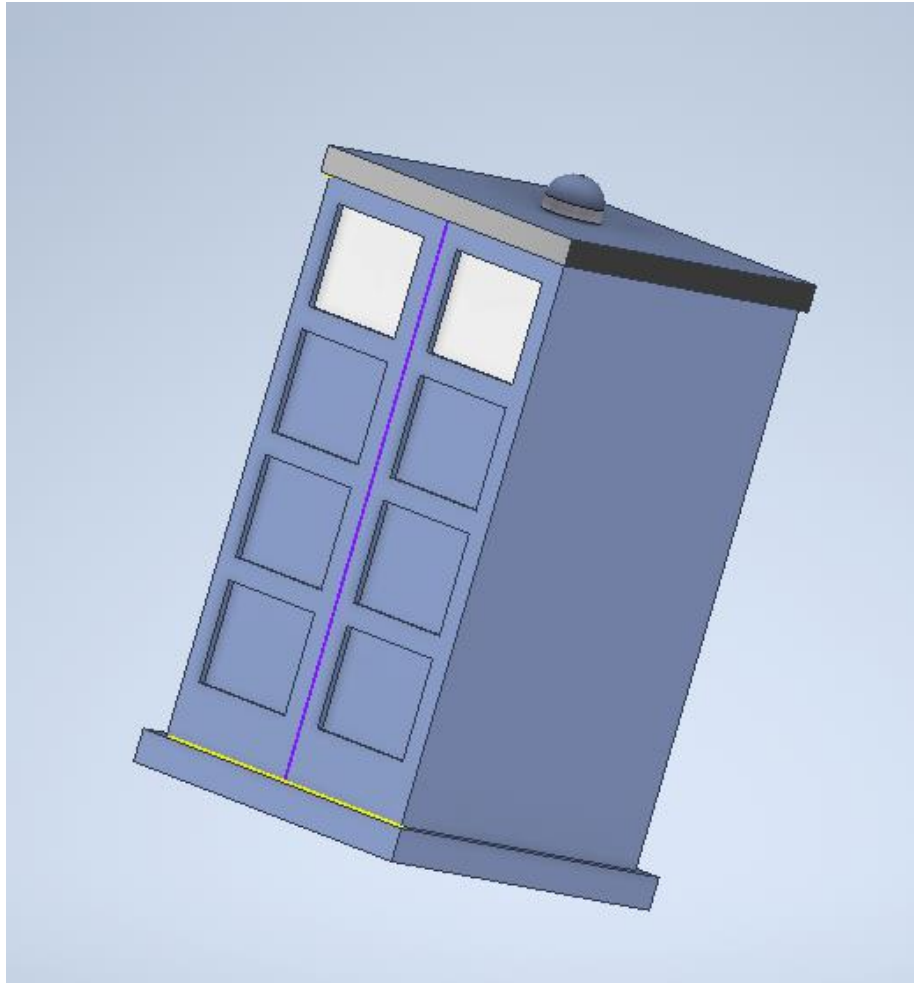


- after finishing this sketch made a 1mm backward extrusion





you should get this:



.to change the colors just click on the part of your and choose and select here

